

# Regeneration and Transport update with Cycling UK Stevenage

23<sup>rd</sup> November 2020

# Agenda

- Introductions
- Transport strategy - David Hodbod
  - Future Town Future Transport
  - The Sustainable Travel Towns bid
  - Local Cycling and Walking Infrastructure Plan
  - HCC funding bid
  - Station Area Action Plan
- Brief overview of regeneration initiatives - Dave Wells
  - SG1
  - Town Square
  - Bus interchange
  - Queensway North
  - Matalan site
  - Station North MSCP and cycle hub
- Cycling UK update- Jill Borchers
  - Town Centre Regeneration Cycling Issues
- Future engagement – Cllr Briscoe and Cllr Gardner
- Any Other Business

# Stevenage Borough Council Sustainable Transport - Policy

**Cycling UK Stevenage**

Monday 23 November 2020

**David Hodbod**

**Principal Planning Officer**

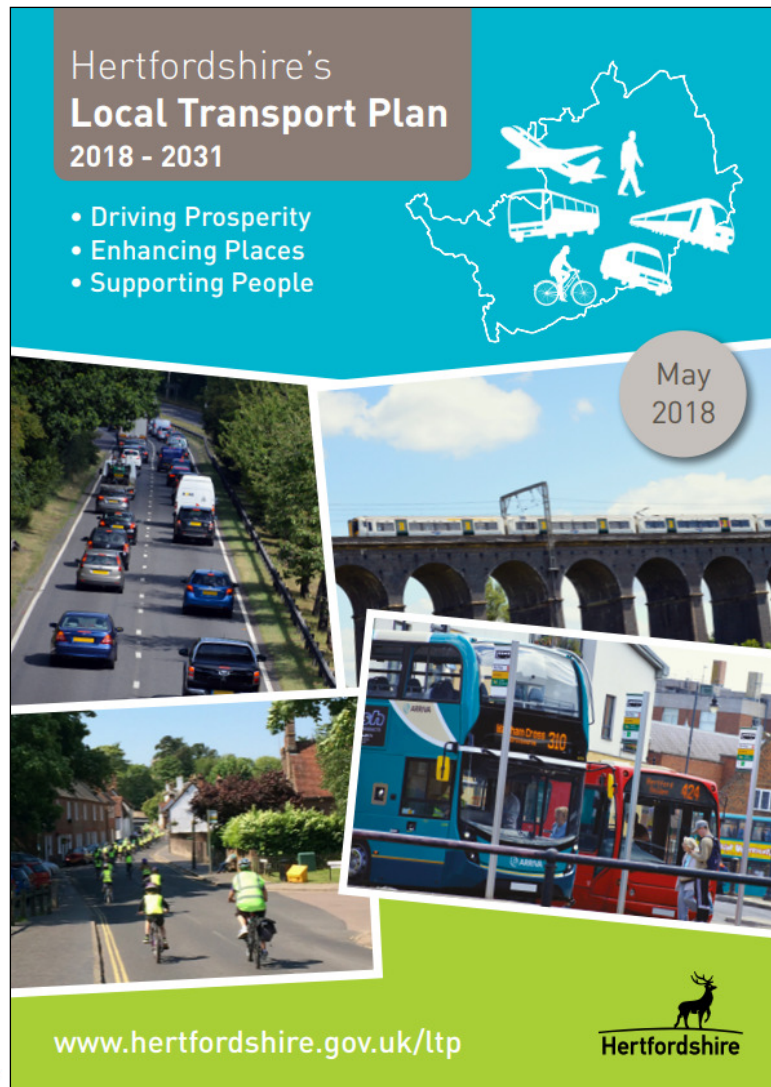
# Future Town, Future Transport 2019



- New Bus Interchange
- 5th Railway Platform
- New Parking Standards
- Workplace Travel plan
- LCWIP
- Cycle Hire Scheme
- Intalink Bus Strategy
- A1(M) Smart Motorway
- Electric Vehicle Use
- Bus Priority Measures
- And many others

<https://www.stevenage.gov.uk/planning-and-building-control/planning-policy/local-plan/evidential-studies/transport-and-infrastructure>

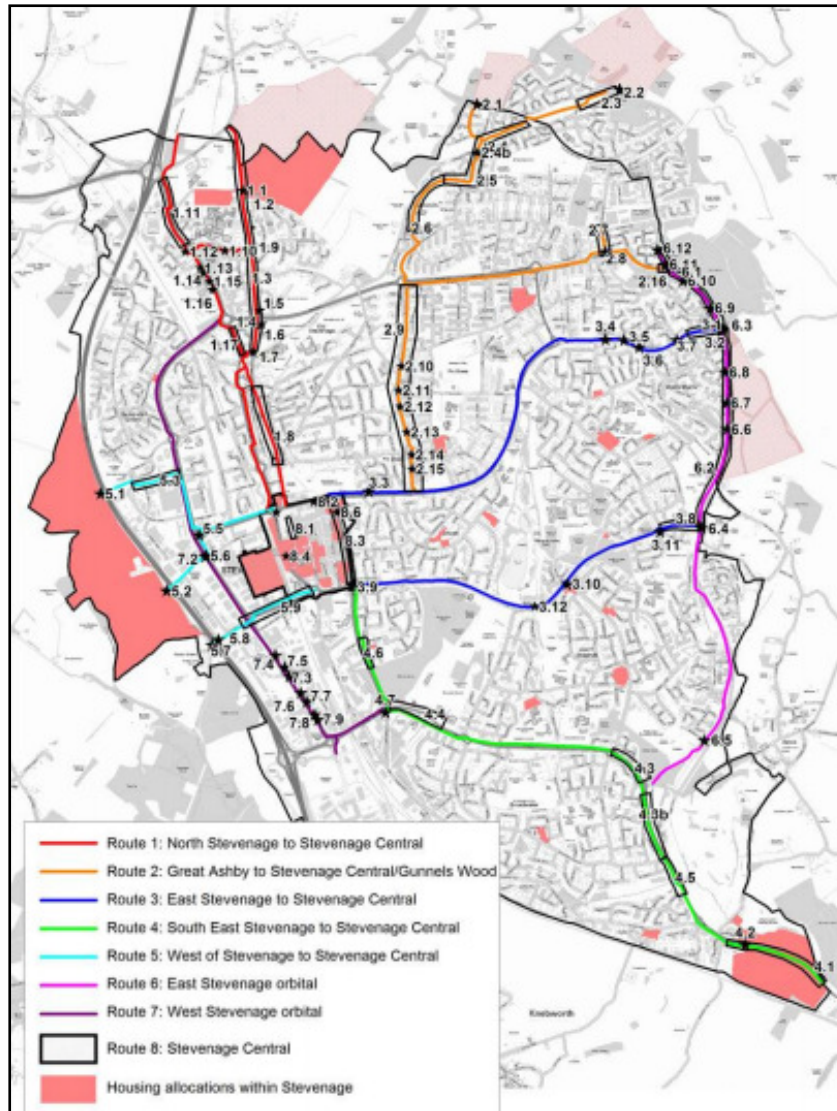
# Sustainable Travel Towns Bid



- HCC programme
- A package of measures
- Significant switch to walking, cycling and public transport
- Demand management,
- New infrastructure for sustainable transport and
- Behavioural change programmes

<https://www.hertfordshire.gov.uk/services/recycling-waste-and-environment/planning-in-hertfordshire/transport-planning/sustainable-travel-town-programme.aspx>

# Local Cycling & Walking Infrastructure Plan

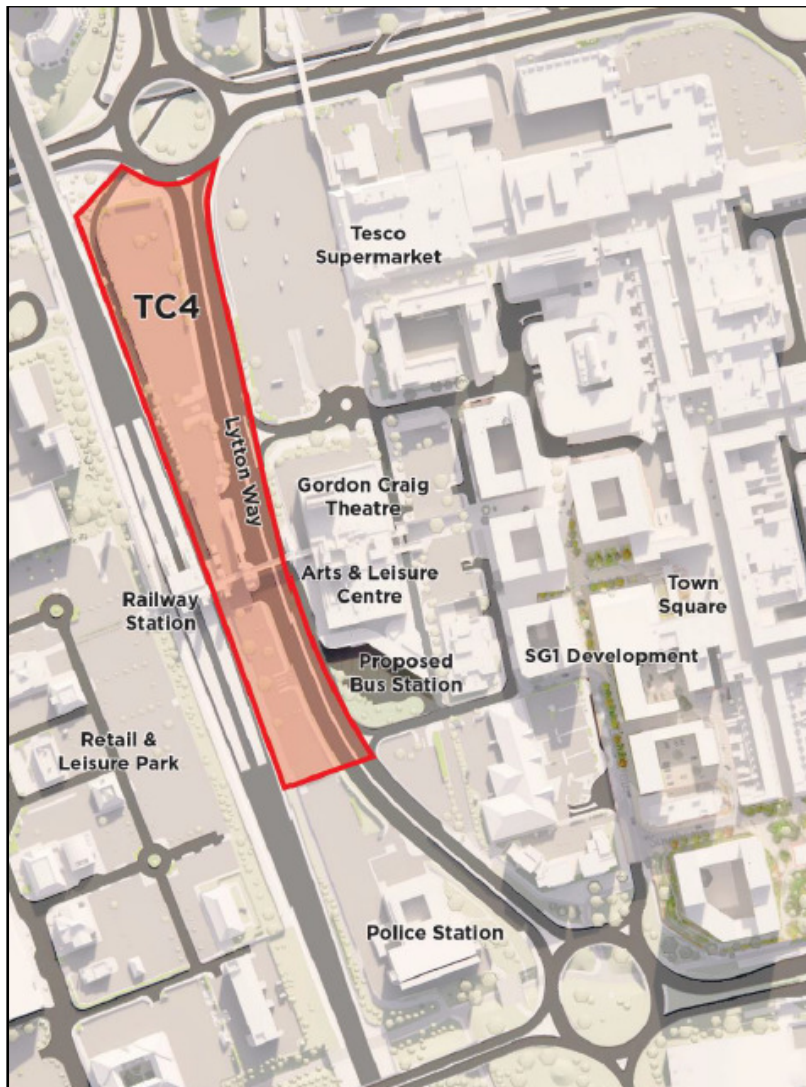


- First in Hertfordshire
- DfT guidance
- Key active travel corridors
- Identifies priorities improvements
- Used as evidence for seeking funding
- HCC bids,
- DfT EATF Tranche 2 bid

<https://www.stevenage.gov.uk/documents/planning-policy/evidential-studies/transport-infrastructure/local-cycling-and-walking-infrastructure-plan-2019.pdf>



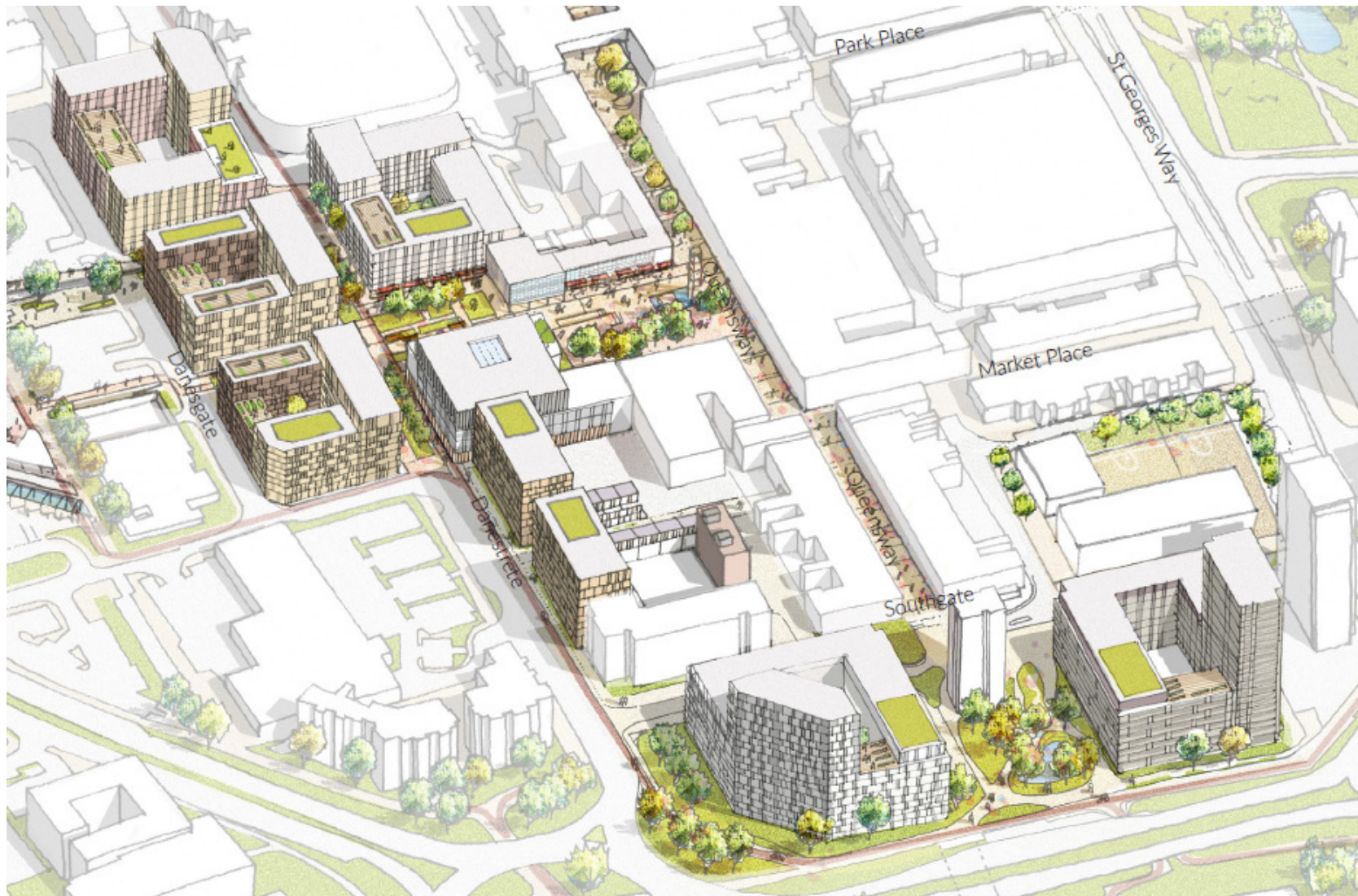
# Rail Station Gateway Area Action Plan



- Additional Planning Policy for a specific area
- Improved land-use in the area around the Station
- Reduce the dominance of cars
- Promote access via sustainable transport
- Promote appropriate land-uses
- Consultation stage early 2021

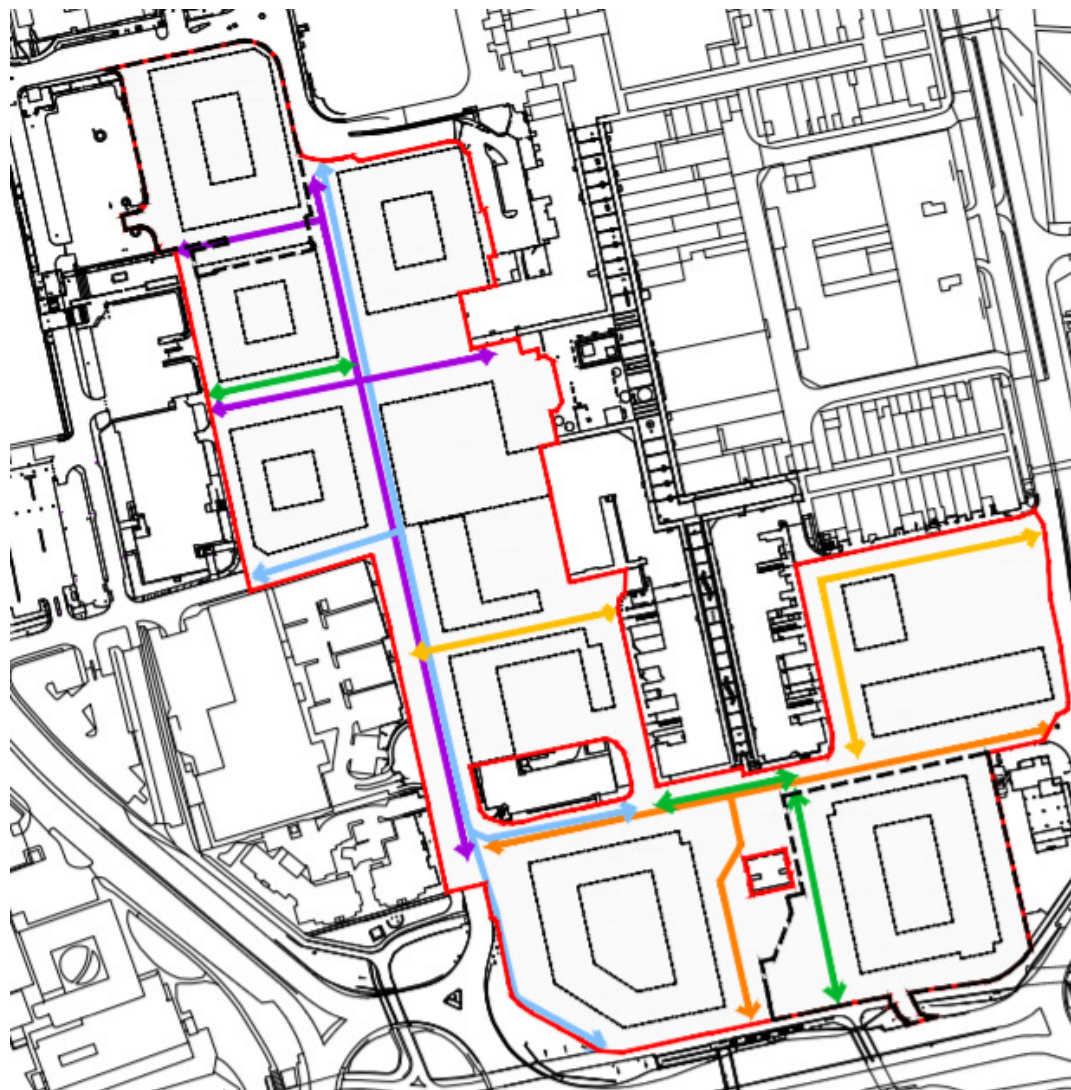
<https://www.stevenage.gov.uk/documents/planning-policy/evidential-studies/transport-infrastructure/local-cycling-and-walking-infrastructure-plan-2019.pdf>

# SG1 Update





# SG1 Update



## Key:

- SG1 Hybrid Application Boundary
- Phase 1 Boundary
- Main pedestrian route
- Secondary pedestrian route
- Tertiary pedestrian route
- New designated cycle route
- New informal cycle route
- Indicative location of buildings

AA6999 SG1 REGENERATION

SG1 PROPOSED PEDESTRIAN &  
CYCLE MOVEMENT

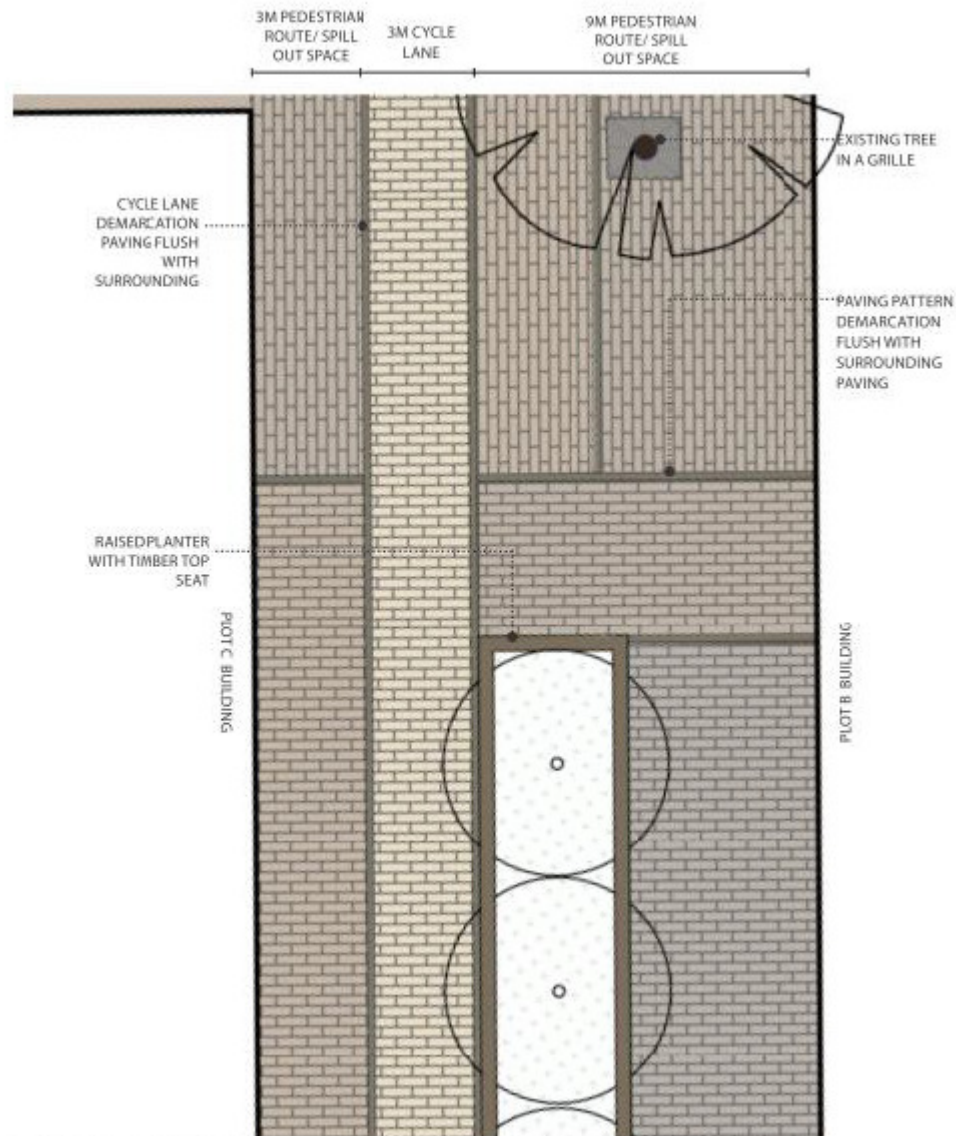
DRAWING NO. 2012

A

INFORMATION PLAN

# SC1 Update

## Pedestrian Priority Areas - Danestrete



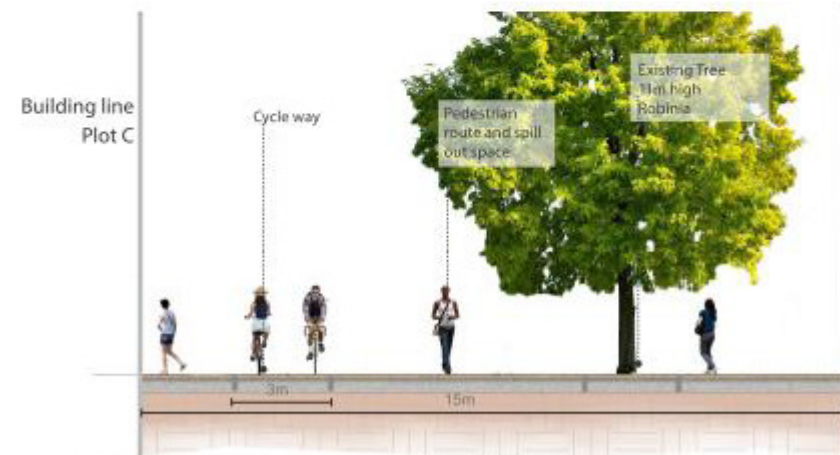
Illustrative plan of proposed Danestrete road - pedestrian and cycle access only



Cycle lane next to pedestrian area - shared space. Little Holland,



Location in Overall Map.



1. Illustrative Section through Danestrete - between Plot C and Plot B



# Town Square Public Realm

- Restoration and renewal of Town Square
- New events space
- High quality paving and lighting
- Heritage features incl. lighting & sculpture enhancement



# North Block Co-working Space



- Work space for 200 people
- Meeting and conferencing facilities
- New ground floor restaurant
- Opening Feb 2021



# Town Square – Public Realm





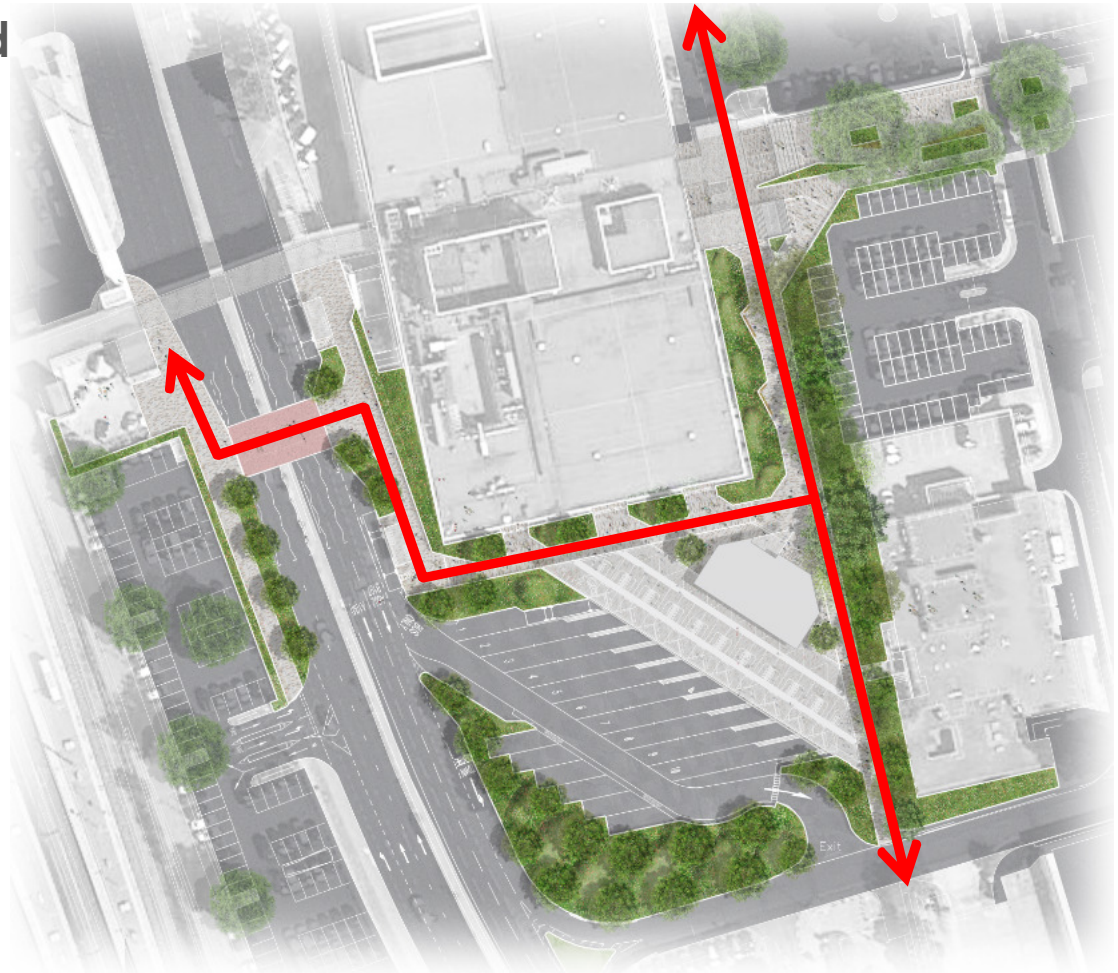
# Bus Interchange





# Bus Interchange

- Features include improved capacity, and safety features, real time passenger information, indoor seating, toilets & café
- Improvement of cycle and pedestrian links to rail station



# Bus Interchange





# Guinness / Matalan





# Reef / Queensway North

- 110 new homes
- Refreshed retail offer
- 10,000ft<sup>2</sup> office space
- New restaurants and cafes
- Gym space





# Queensway North



# Station North MSCP and cycle hub





# Stevenage Town Investment Plan



Stevenage Town **Investment** Plan

October 2020

# Cycling and pedestrian Improvements



## Scheme summary:

- Trail improvements
- 22 underpasses
- Linking with Town Centre developments such as Bus Interchange and SG1
- Linking Heritage and art with the unique cycleway infrastructure



# Sport and Leisure Hub at Town Centre Gardens

- A new state of the art sport and Leisure hub adjacent to the main town park. This would bring together wet and dry facilities
- A new focal point for the town encouraging greater levels of participated in sport



# Other Town Investment plan project highlights





# Cycling UK Stevenage update

- Town Centre Regeneration Cycling Issues
- Future engagement
- Any Other Business