

The map displays the City of Cambridge, Massachusetts, with the Charles River flowing along the western and northern edges. Key landmarks and areas labeled include:

- Charles River:** The river is shown in blue, winding through the city.
- Major Roads:** Orange lines represent major highways, including I-93 and I-495.
- City Center:** The central area, including the downtown district, is highlighted in a light brown color.
- Neighborhoods:** Various neighborhoods are labeled, such as Allston, Central Square, and the University Heights area.
- Parks and Green Spaces:** Green areas represent parks and open spaces, including the Cambridge Common and various smaller parks.
- Water Bodies:** In addition to the Charles River, several ponds and lakes are shown, such as the Cambridge Reservoir and the Lake.
- Landmarks:** Specific landmarks are marked with icons and labels, including the Cambridge City Hall, the Cambridge Public Library, and the Cambridge Museum of Science.

The map uses a color-coded system to distinguish between different types of land use and infrastructure, providing a comprehensive overview of the city's geography and urban layout.

An aerial photograph of a large, modern, circular highway interchange with multiple lanes and ramps. The interchange is surrounded by residential and commercial buildings, including a large, modern building with a flat roof in the foreground. The surrounding area includes a mix of low-rise and mid-rise structures, with some greenery visible in the background.

Jill Borchers and Tina Walker

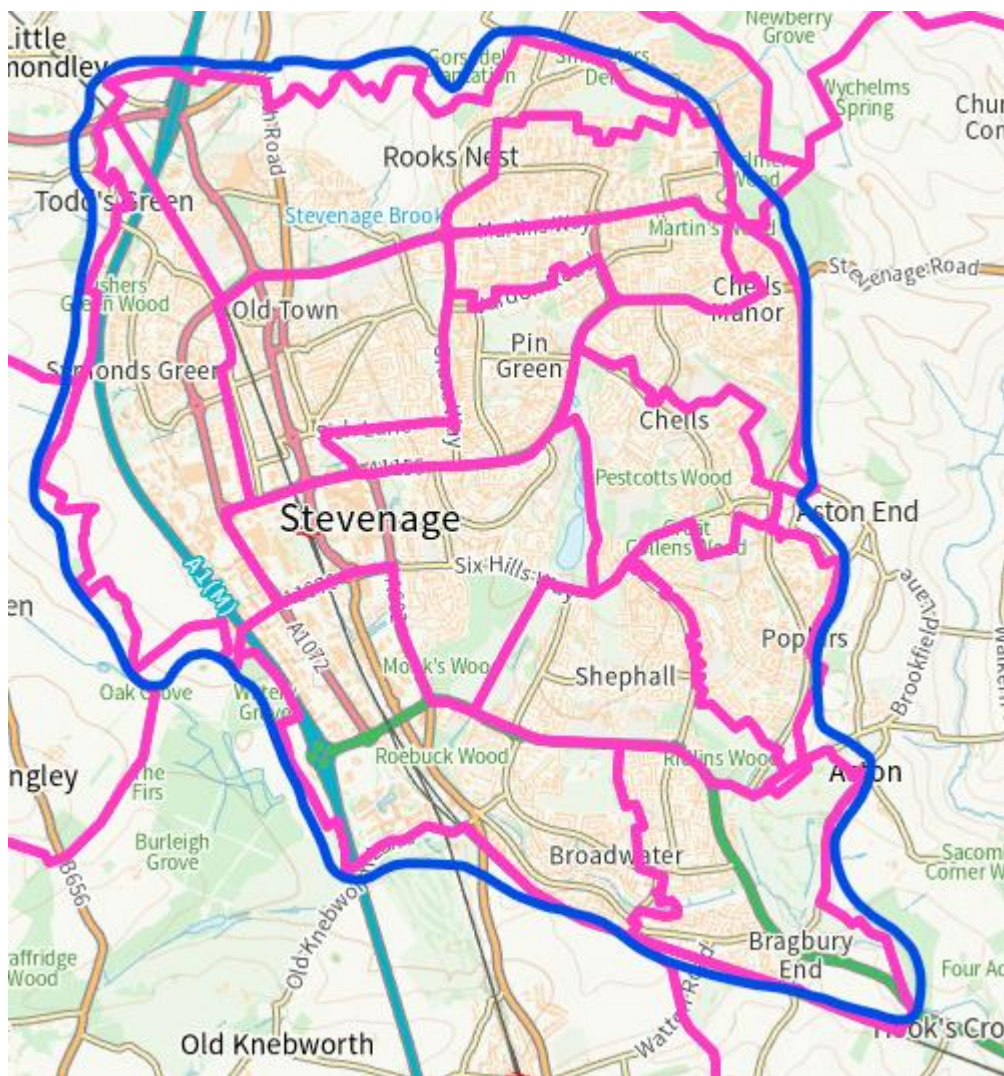
**we are
cycling**
Stevenage UK



Hertfordshire County Council
Highways Authority
Cycleway repairs

Stevenage Borough Council
Cycleway cleaning
Planning
Parking
Town Centre Regeneration

we are
cycling
Stevenage **UK**



Stevenage Borough Council

13 wards

3 councillors per ward

Annual elections

Each of 3 years, one councillor elected

(4th year Hertfordshire County Council elections)

www.ordnancesurvey.co.uk/election-maps/gb/

we are
cycling
Stevenage UK



Cambridge Cycling Campaign

For more, better and safer cycling in and around Cambridge

[WHY CYCLING](#) ▾ [OUR WORK](#) ▾ [ISSUES & CAMPAIGNS](#) ▾ [WHAT'S HAPPENING](#) ▾ [HELP & ADVICE](#) ▾ [CONTACT](#) ▾

Elections

We make every effort to contact all election candidates (via political party administrators where relevant and also through social media and other public channels) and invite them to participate in the survey. Once we have candidate contact details, we will send them a short list of questions to find out what they think about improving provision for cycling in and around their area.

Jump to: [Overview page](#) ▾

Responses will be published on Thursday 18 April 2024 and can be viewed within these pages.

If you are a candidate in the forthcoming elections, please see our [FAQs for candidates](#) or email us: contact@camcycle.org.uk

Kings Hedges Ward by-election (Cambridge City Council), July 2023

Summary: Election to Kings Hedges Ward in July 2023

Polling date: Tuesday 4th July 2023

Questions: [➡ Index of all questions for this election](#)

Respondents: [Index of all respondents](#)



▶ Candidates' responses for each ward

The following wards being contested are those for which we have sent questions to candidates:

- [King's Hedges](#) (4 candidates standing)

Active Travel Café

Wow!

What could we do?

we are
cycling
Stevenage **UK**

Cycling UK Stevenage sent 3 questions to the agents of all candidates standing in the forthcoming SBC elections on Thursday 4th May.

Responses have now been received on behalf of all candidates standing.

Question 1

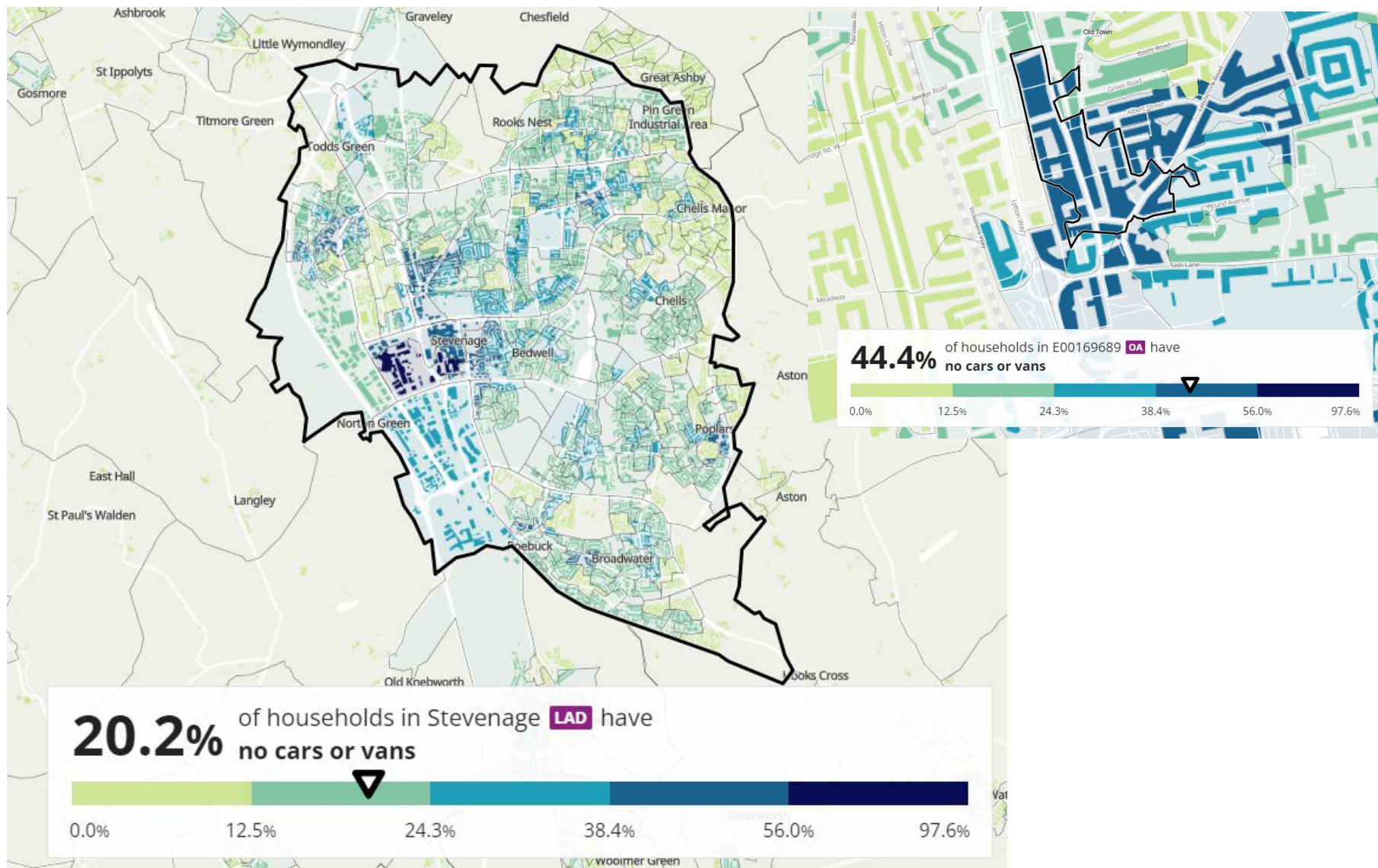
Recent census data shows that over 20% of households in Stevenage do not have a car or van. In some areas closest to the Town Centre this percentage is considerably higher. What would you do to ensure that cycling is a feasible choice for everyday journeys in Stevenage? Responses received

Question 2

Stevenage Borough Council have had cycle hangars for use in residential areas available since 2021 but only 2 are in place so far. What would you do to ensure that more cycle hangars are installed to allow people to store cycles securely near their homes? Responses received

Question 3

Stevenage Borough Council is our planning authority. How will you ensure that decisions taken are in line with national guidance on the promotion of active travel? Responses received



www.ons.gov.uk/census/maps/choropleth/housing/number-of-cars-or-vans/number-of-cars-3a/no-cars-or-vans-in-household?lad=E07000243

we are
cycling
Stevenage **UK**

11th April 2023

Dear Agent

Cycling UK (www.cyclinguk.org) is the UK's cycling charity, enabling and inspiring more people to cycle more often since 1878. Representatives of the local group, Cycling UK Stevenage, meet regularly with officers from Stevenage Borough Council to discuss issues of relevance to people who cycle or who would like to cycle around the town.

As we approach the Stevenage Borough Council elections on 4th May, we would like to address the following 3 questions to each of the candidates in your party that are standing in the various wards to consider. I would be grateful if you could pass them on to the relevant candidates.

We will share the answers that we receive by Wednesday 25th April on our website on Thursday 26th April. www.cyclinguk.org/group/page/stevenage-cycle-campaign-cycling-uk

Question 1

Recent census data shows that over 20% of households in Stevenage do not have a car or van. In some areas closest to the Town Centre this percentage is considerably higher. What would you do to ensure that cycling is a feasible choice for everyday journeys in Stevenage?

www.ons.gov.uk/census/maps/choropleth/housing/number-of-cars-or-vans/number-of-cars-3a/no-cars-or-vans-in-household

Question 2

Stevenage Borough Council have had cycle hangars for use in residential areas available since 2021 but only 2 are in place so far. What would you do to ensure that more cycle hangars are installed to allow people to store cycles securely near their homes?

www.stevenage.gov.uk/leisure-culture-and-wellbeing/sport-and-leisure-services/cycling/lockable-bike-shelters

Question 3

Stevenage Borough Council is our planning authority. How will you ensure that decisions taken are in line with national guidance on the promotion of active travel?

A copy of this letter will be sent by email to the local contact point for your party where it is available online. If you would like to receive a copy direct, please contact me at the email address below.

We look forward to hearing from the candidates.

https://www.cyclinguk.org/sites/default/files/group/attachment/2023-11/cycling_uk_questions_for_sbc_election_candidates_2023.pdf

Letter sent by post
to the agents –
addresses were
available online.

By email to party
contacts



Event	Date (deadline if not midnight)
Publication of Notice of Election	Monday 18 March 2024
Deadline for the receipt of Nomination Papers	Friday 5 April 2024 (4pm)
Publication of Statement as to Persons Nominated	Monday 8 April 2024 (4pm)
Deadline for receiving applications for registration	Tuesday 16 April 2024
Deadline for receiving new postal vote and postal proxy applications, and for changes to existing postal or proxy votes	Wednesday 17 April 2024 (5pm)
Deadline for receiving applications for Voter Authority Certificates	Wednesday 24 April 2024 (5pm)
Deadline for receiving new applications to vote by proxy (not postal proxy or emergency proxy)	Wednesday 24 April 2024 (5pm)
Publication of Notice of Poll	Wednesday 24 April 2024
Deadline for the appointment of Polling and Counting Agents	Thursday 25 April 2024
Polling Day	Thursday 2 May 2024 (7am to 10pm)
Election Count (Declaration of Results)	Friday 3 May 2024 (SBC) Saturday 4 May 2024 (PCC)

Stevenage Borough Council is our planning authority. How will you ensure that decisions taken are in line with national guidance on the promotion of active travel?

Conservative Party

We would heed the advice of Hertfordshire County Council on how developments should be designed and implemented, in line with their Local Transport Plan and Design Guide - this will ensure cyclists are given proper priority on the highways network.

Green Party

The Stevenage Local Plan is being reviewed in 2023. Active Travel guidance needs to be incorporated into the Local Plan to ensure that all future development is designed to the highest Active Travel standards. We would also press for all developments under planning to be looked at with the new guidance retrospectively so that they also are constructed to the new standards. All new developments must offer active travel infrastructure properly integrated with the existing networks of cycleways and footpaths. When a development is built, the developer must provide funds for local infrastructure, we would press for this to be spent before the development is occupied.

Labour Party

As a Planning Authority these policies are in place in all our local plan and other policy documents. These policies need always to be in our members' minds when considering planning applications, as advised by the planning officers.

Liberal Democrats

<https://www.cyclinguk.org/group/page/stevenage-borough-council-elections-2023>



2024 – New Boundaries
Stevenage Borough Council has “All Out” elections
All 39 seats are being contested.

This year's questions

- Use the answers received last year
- Refer to specific issues in particular wards
- Include cycle hire scheme
- Promotion of active travel as part of climate change strategy

More publicity

Improved tech capability

Jill Borchers and Tina Walker
cyclingukstevenagecampaigns@gmail.com

